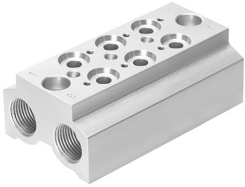


Connection block CPE14-3/2-PRS-3/8-3

Part number: 550560

FESTO



Data sheet

Feature	Value
Width dimension	20 mm
Type code	CPE14-PRS
Mounting position	Any
Max. no. of valve positions	3
Max. no. of pressure zones	2
Burst pressure	5 MPa
Burst pressure	50 bar
Burst pressure	725 psi
Operating pressure	-0.09 MPa ... 1 MPa
Operating pressure	-0.9 bar ... 10 bar
Corrosion resistance class (CRC)	2 - Moderate corrosion stress
Temperature of medium	-5 °C ... 50 °C
Ambient temperature	-5 °C ... 50 °C
Max. tightening torque for valve mounting	1.2 Nm
Product weight	228 g
Manifold block type of mounting	With through-hole
Pneumatic valve mounting type	With internal thread
Pneumatic connection 1	G3/8
Pneumatic connection 3	G3/8
Pneumatic connection 5	G3/8
Note on materials	RoHS-compliant
Manifold rail material	Wrought aluminum alloy